



OCEANA Glass Drop-In Sink Model Specification

OCEANA Self-rimming Glass Drop-in Sink:

Model #: 001

Countertop setting: standard oval 19 1/2" x 16 1/2"

Outer edge sink dimensions: 20" x 17" x 6"

Inner bowl dimensions: 15" x 10" x 5 3/4"

Weight: approx. 17lbs

Available colors: 19

Pattern: OCEANA

Faucet options: single drill, 4" spread drill, 8" spread drill

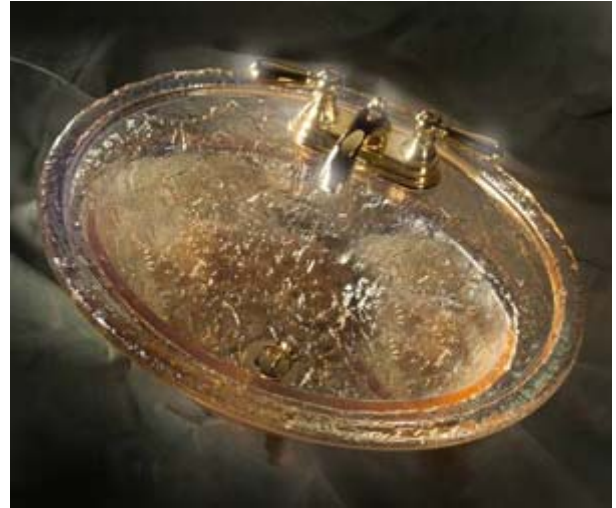
Standard: 1 3/4" hole

Drain requirements:

1 1/4" tail pipe




2 1/8" flange

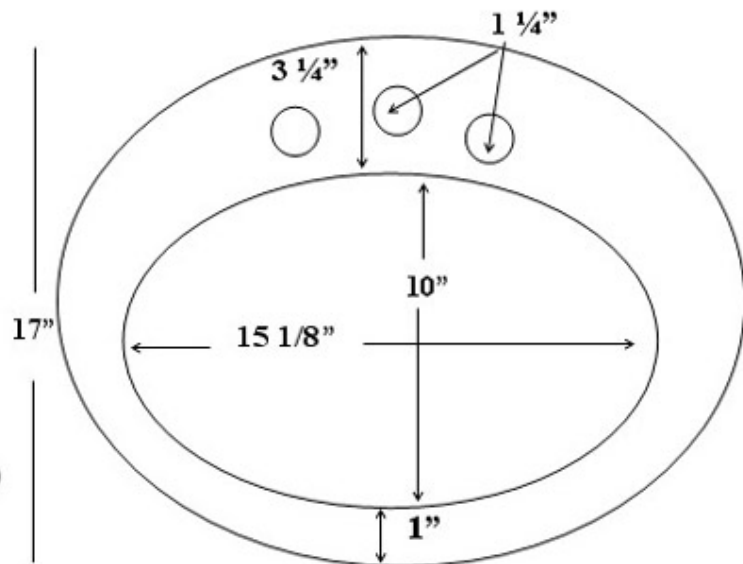
Overflow: Available as special order only



Drop-In Sinks

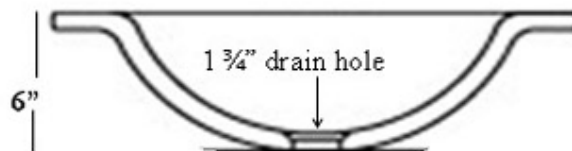
- Model # 001
- weight: approx. 24 lbs
- Overflow: Special Order only
- Faucet Options:

- Single Hole 
- 4" spread 
- 8" spread 



Drop-in Installation:

- Apply a clear epoxy/caulking to the under outer rim of drop-in and place into space cut out of countertop



Template included with sink